

ASUKABOOK[®]

BLANK TEMPLATE TIPS
Understanding the Templates

BLANK TEMPLATES



0000.psd



0001.jpg



0203.jpg



0405.jpg



0607.jpg



0809.jpg



1011.jpg



1200.psd

Each template set contains the following:

0000.psd ... book cover
0001.jpg ... starting right page
0203.jpg ... pgs. 2 and 3 spread
0405.jpg ... pgs. 4 and 5 spread
etc...
8000.psd ... last left page

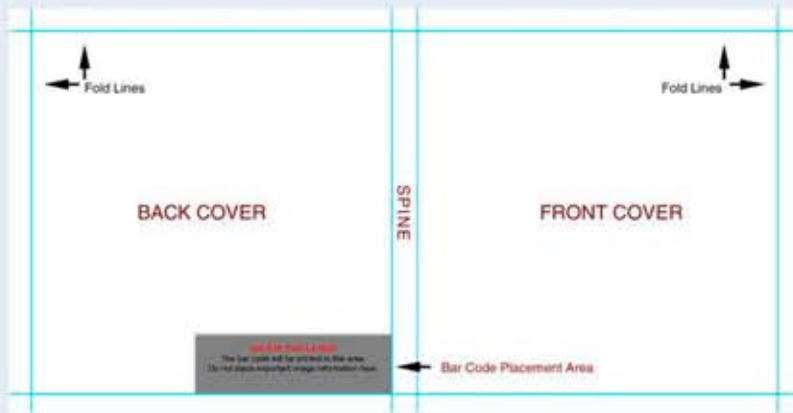
Please do not alter any of the file specifications already set for you in each of the template sets.

DOCUMENT DIMENSION
RESOLUTION
COLOR SPACE
GUIDE LINES
FILE NAME

If any changes are made, File Checker will generate an error message while attempting to create your pdf document.

It is also extremely important that you **review your layout before sending your files** to print. AsukaBook will faithfully reproduce your design. For this reason, it is solely your responsibility to ensure that your order is free of typographical errors, graphical errors and/or poor image quality.

BLANK TEMPLATE - COVER



BLANK TEMPLATE - COVER

Resolution: 260 dpi
Fold Line: Varies
Spine: Varies
Barcode: Back Cover



INCORRECT PLACEMENT

- 1 Text is too close to spine.
- 2 Image edge stops at fold line.



UNDESIREABLE RESULTS

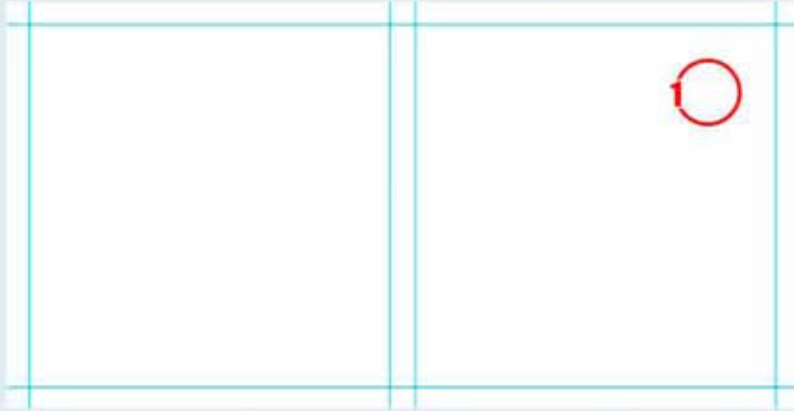
- 1 Text on front cover is within folding crease area.
- 2 Background color will show at edge of cover.



CORRECT PLACEMENT

- 1 Place front/back cover text at least .50 in. away from spine area.
- 2 Image edge placed at the edge of the blank canvas or template (beyond fold line).

BLANK TEMPLATE - COVER



INCORRECT

- 1 Cover file 0000.jpg left blank (white).

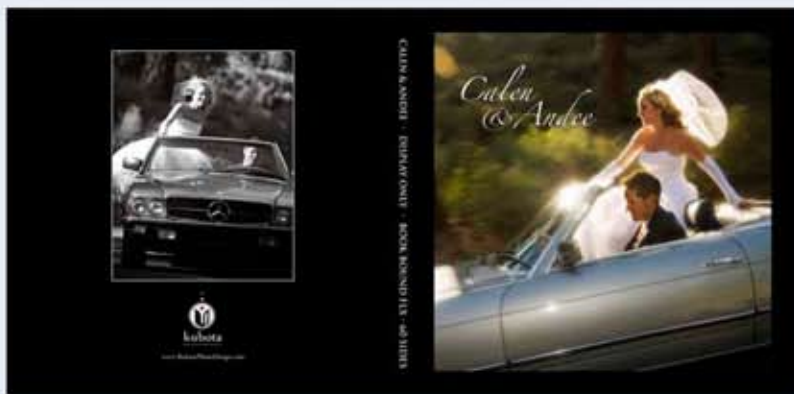


UNDESIREABLE RESULTS

- 1 Book Bound LX/FLX presentation case will be printed exactly as cover file 0000.jpg.

All other covers will also be printed exactly as cover file 0000.jpg.

All Book Bound EX jackets will also be printed exactly as cover file 0000.jpg.



CORRECT

- 1 Design cover (file 0000.psd).



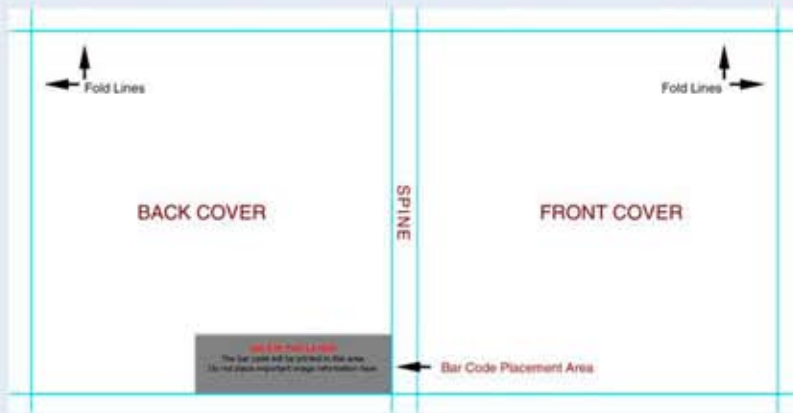
DESIREABLE RESULTS

- 1 Book Bound LX/FLX presentation case designed.

All other covers will also be printed exactly as cover file 0000.jpg.

All Book Bound EX jackets will also be printed exactly as cover file 0000.jpg.

BLANK TEMPLATE - COVER



BLANK TEMPLATE - COVER

Resolution: 260 dpi
Fold Line: Varies
Spine: Varies
Barcode: Back Cover



INCORRECT PLACEMENT

- 1 Text is too large for spine area.
- 2 Logo/Image placed within barcode area. Barcode grey placement area. Barcode grey placement box not deleted.



UNDESIREABLE RESULTS

- 1 Text is too large for spine area.
- 2 Logo/Image is covered by barcode.

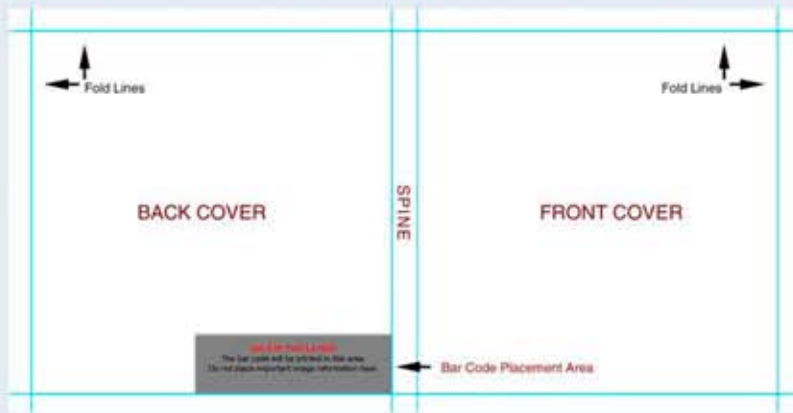


CORRECT PLACEMENT

- 1 Text size is smaller than spine area.
- 2 Place logo/image outside barcode area. Delete grey barcode placement box.

Last inside page also has a barcode placement area.

BLANK TEMPLATE - BARCODE



BLANK TEMPLATE - BARCODE

Barcode: Back Cover
Last Inside Page



INCORRECT PLACEMENT

- 1 Barcode grey placement box not deleted.

Our system will automatically overprint barcode.



UNDESIREABLE RESULTS

- 1 Barcode grey placement box not deleted.



CORRECT PLACEMENT

- 1 Deleted grey barcode placement box.

Our system will automatically overprint the barcode.

BLANK TEMPLATE - BARCODE



BARCODE PRINTING AREAS

Book Bound



BARCODE PRINTING AREAS

Book Bound EX Jacket



BARCODE PRINTING AREAS

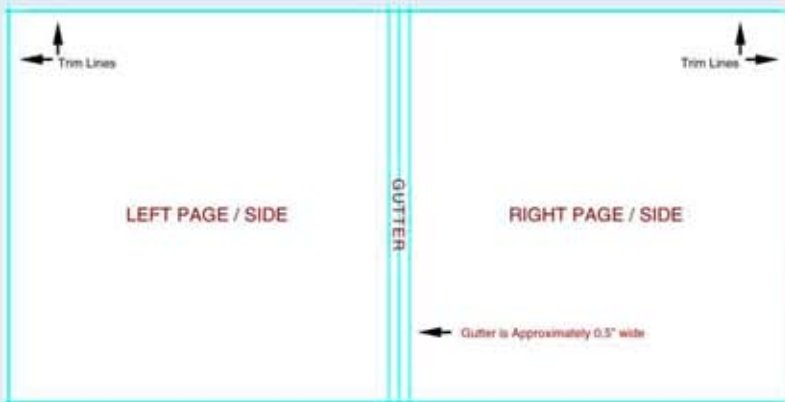
Book Bound LX/FLX Presentation Case



BARCODE PRINTING AREAS

Last Inside Page

BLANK TEMPLATE - INSIDE PAGES



BLANK TEMPLATE - INSIDE PAGES

Resolution: 271 dpi
Trim: Approximately .118 in
Gutter: Approximately .50 in.



INCORRECT PLACEMENT

- 1 Important part of image placed within gutter area.
- 2 Image edge stops at trim line.



UNDESIREABLE RESULTS

- 1 Important part of image is lost in the gutter.
- 2 Possible paper shifting while trimming may leave/show part of background color.



CORRECT PLACEMENT

- 1 Important part of image placed outside gutter area.
- 2 Image edge placed at the edge of the blank canvas or template (beyond trim line).